



RECYCLING MATTERS

FOR A WASTE-FREE COLLAR CITY

The EPA Wasted Food Scale

Recently, the Environmental Protection Agency (EPA) reimagined their food recovery hierarchy. This change marks a new perspective on the most to least preferred methods of keeping food scraps out of the trash (and ultimately the landfill). The new infographic, called the Wasted Food Scale, was created after the 2023 [From Field to Bin: The Environmental Impacts of U.S. Food Waste Management Pathways report](#).

What's Different

The [EPA Wasted Food Scale](#) has two major updates from the old food recovery hierarchy. The first is a change in the appearance. What used to be an upside down triangle is now in the shape of a 'U.' The other major change is the combined categories. New methods of recovery have been added, such as upcycling food, unharvesting food, and applying the food to the land. Within each rank there are similarly impactful recovery methods. Additionally, the EPA has specified that even if there is energy recovered after incinerating the food scraps, it is still the least preferred method.

WHAT'S INSIDE OUR NEWSLETTER:

[EPA WASTED FOOD SCALE](#)

[YARD CLEAN-UP SEASON](#)

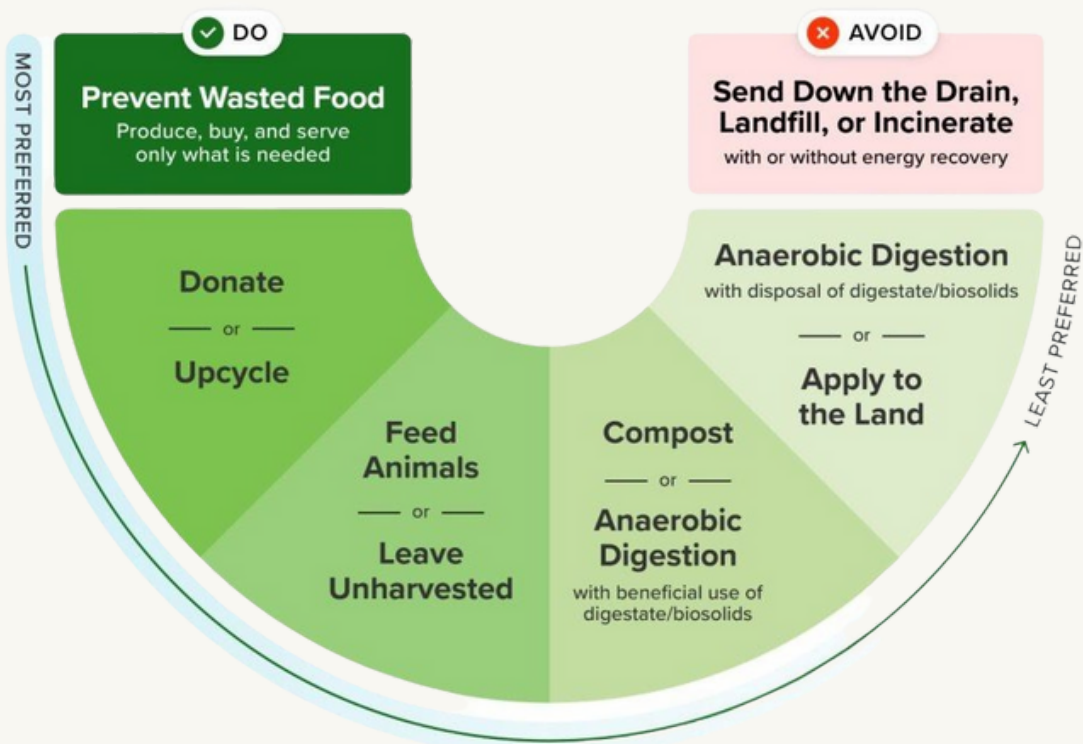
[BATTERY DROP-OFF](#)

[COMPOSTING PROGRAM CLOSE OUT](#)



Wasted Food Scale

How to reduce the environmental impacts of wasted food



Pictured: The EPA Wasted Food Scale with most preferred methods on the upper left and least preferred on upper left.

[VISIT OUR WEBSITE](#) OR [FOLLOW US ON FACEBOOK](#)

Yard Clean-up Season

To our residents with municipal recycling and trash service: your leaf bags are picked up on your regular recycling and trash collection day. **If you have brush and branches you'd like collected, please schedule a pickup with our DPW Dispatcher: (518) 270-4579.**

Troy residents can also drop off their branches/brush and bagged leaves at the Troy Resource Management Facility (AKA the Alamo) on Tuesdays and Thursdays, 9 am to 1 pm.

Other notes about yard materials:

- Place leaves and lawn clippings in brown paper bags
- Make sure everything is easily visible for collection
- Branches and brush should be trimmed to 4-5 feet in length and bundled
- Plastic bags **will NOT** be accepted
- Please keep trash out of yard bags!
- **Do NOT** put your bags or bundles in the street or on the sidewalk; instead, put them at the edge of your property

Battery Recycling Drop-off: Open!

We are officially accepting batteries! This program is open on Tuesdays from 9 am to 1 pm. Please notify the laborer at the facility that you have batteries so they may assist you.

Please note that all batteries must be taped, and separated by rechargeable and single-use as well as type.

If these hours aren't accessible for you, STAPLES has a battery take-back program!



Pictured: a pair of batteries.

Curbside Composting Program Close-out

This program was administered in partnership with local food scrap hauler FoodScraps360 and the Town of Bethlehem for a curbside food scrap collection service. The United States Department of Agriculture (USDA) and National Resource Conservation Service (NRCS) awarded the City of Troy funding towards From the Ground Up: An Environmental Stewardship Initiative, which started on September 29th, 2021.

Thanks to this program, 101,085 pounds of food scraps diverted from the landfill. That's 50.5 tons – the weight of approximately 33 Volkswagen Beetles – that was instead used to create nutrient-rich compost and support our neighbors' ability to grow their own food.

To view the full report of the program's impacts, visit www.troyny.gov/foodscraps.



Pictured: City of Troy seal, Town of Bethlehem seal, and the FoodScraps360 logo.

VISIT OUR WEBSITE OR FOLLOW US ON FACEBOOK

Upcoming Events

COMMUNITY-BASED SUSTAINABLE EVENTS

TROY RESOURCE MANAGEMENT FACILITY (ALAMO) OPEN

Tuesdays and Thursdays, 9 to 1

*Services: food scrap drop-off, pallet pick-up, mulch pick-up,
bagged leaf and branch drop-off, battery drop-off*

Important Links

We've made some changes to the Recycling pages on the website! To learn more about our programs, share info with friends, family, and neighbors, we've added a new section to the newsletter with important links. Underlined text is hyperlinked.

Recycling Guide Database: www.troyny.gov/recyclingguide

Textile Reuse and Recycling Program: www.troyny.gov/textiles

Rechargeable Battery Recycling Program: www.troyny.gov/batteries

Food Scrap Drop-off: www.troyny.gov/foodscraps

Recycling Information: www.troyny.gov/recycling

Household Hazardous Waste Events: www.troyny.gov/hhw

Electronics Recycling Events: www.troyny.gov/electronics

Trash Information: www.troyny.gov/269/Garbage-Collection



Pictured: a red white and blue Uncle Sam style hat with a recycling symbol and a black search box with a link.

VISIT OUR WEBSITE OR FOLLOW US ON FACEBOOK